



Size:



Touch Glass  
LCD Display  
**Zero-Gap Technology**

**4K IWB BUILT-IN ANDROID 11**

**40**  
**MULTI TOUCH**

**9 SCREEN WIRELESS DISPLAY**

**36 DEVICES CONTENT SHARING**

**1000 Mbps LAN PASS THROUGH**

The "DTG-A311D2" series is an Ultra High-Definition 4K Touch Screen with Android 11 operating system / Windows 10/11 system built-in. Accurate IR touch technology provides improved touch reliability, precision and fast response. It recognizes 2mm / 8mm size object and the difference between pen tip, finger, eraser and palm.

With latest generation of 8 core CPU and large amount of memory, DTG-A311D2 can provide a smoother using experience than ever.

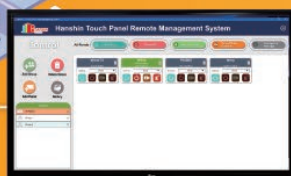
## Remote Management System (MDM)

Remote Control  
All Panels

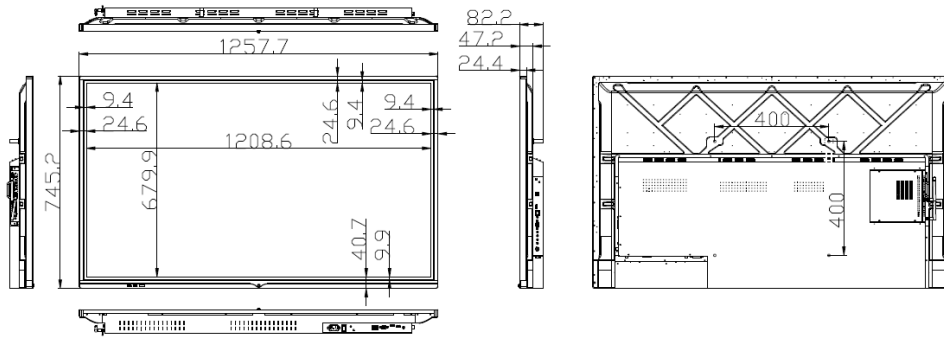


- 01 **Power on/off (individual/group)**
- 02 **Status monitor**
- 03 **Video & image broadcast (individual/group)**
- 04 **Remotely, batch mode install/uninstall applications**
- 05 **Installation of applications from google play store**
- 06 **Remote real-time screen control/view**
- 07 **Broadcast notice to all or selected panels**
- 08 **Device-level usage history and reports**

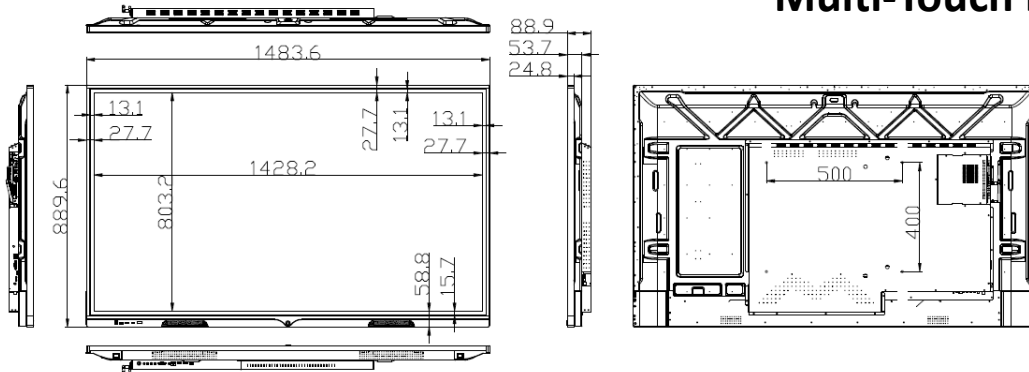
Support



## 55" Multi-Touch Panel



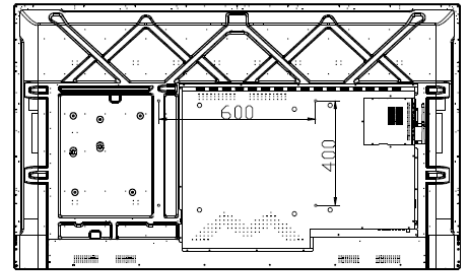
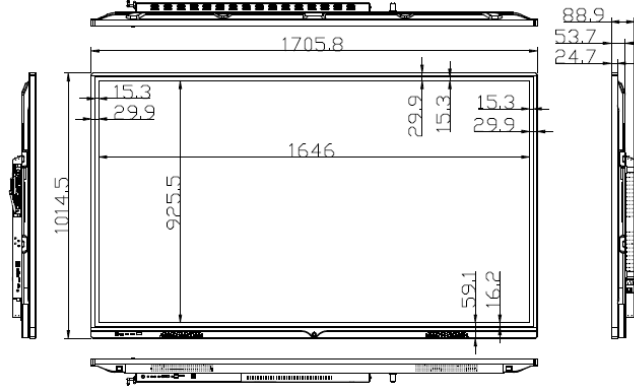
## 65" Multi-Touch Panel



NOTE: Specifications in this catalog are for general reference only and are subject to change without notice.

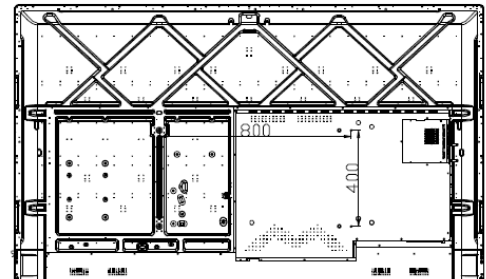
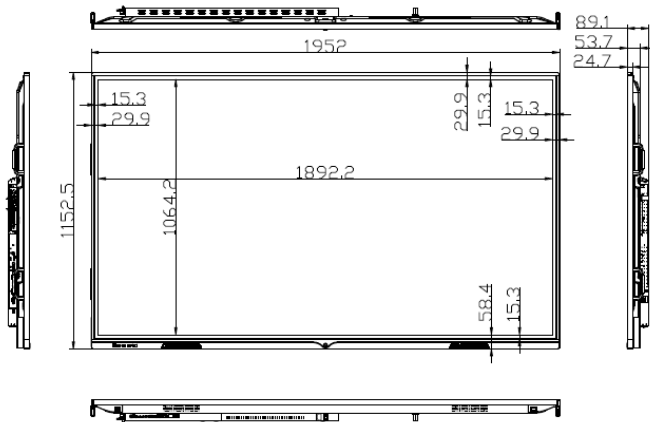
**75"**

**Multi-Touch Panel**



**86"**

**Multi-Touch Panel**



NOTE: Specifications in this catalog are for general reference only and are subject to change without notice.

| Model                                 | DTG-55-A311D2  | DTG-65-A311D2                            | DTG-75-A311D2                            | DTG-86-A311D2                            |
|---------------------------------------|--|--|--|--|
| Product name                          | 55" HANSHIN - Infrared Multi-Touch PANEL   | 65" HANSHIN - Infrared Multi-Touch PANEL | 75" HANSHIN - Infrared Multi-Touch PANEL | 86" HANSHIN - Infrared Multi-Touch PANEL |
| <b>Touch sensor</b>                   |  |  |  |  |
| Touch technology                      | Infrared technology  |  |  |  |
| Touch points                          | Pen and touch support with up to 40 touch points   |  |  |  |
| Touch IR wavelength                   | 940 nm   |  |  |  |
| Minimum touch Object size             | 2 mm<br>Auto-detection of 2 mm / 8 mm stylus, color and line thickness                         |  |  |  |
| Touch accuracy                        | ±1.5 mm  |  |  |  |
| Touch response time                   | 4-12 ms  |  |  |  |
| Touch PC interface                    | USB 2.0 (full speed) HID compliant (plug & play)   |  |  |  |
| Glass surface                         | Zero-Gap technology, Double-sided anti-glare glass   |  |  |  |
| Touch supported OS                    | Windows 11/ 10; Mac; Linux; Android  |  |  |  |
| <b>Panel</b>                          |  |  |  |  |
| Diagonal size                         | 55"  | 65"                                      | 75"                                      | 86"                                      |
| Screen type                           | TFT LCD with Direct LED backlight  |  |  |  |
| Display resolution                    | 3840 x 2160 (4K UHD)   |  |  |  |
| Contrast ratio                        | 4000:1   |  |  |  |
| Response time                         | 8 ms (GTG)   |  |  |  |
| Brightness (average)                  | 350 cd/m <sup>2</sup>  |  |  |  |
| Colors depth                          | 1.07 billion colors  |  |  |  |
| Life time (average)                   | > 50000 hrs  |  |  |  |
| Viewing angle                         | H: 178° / V:178° (CR>=10)  |  |  |  |
| <b>Build-in android specification</b> |  |  |  |  |
| CPU                                   | 64-bit architecture, 4 x Cortex-A73 at 2.2GHz + 4 x Cortex-A53 at 2.0GHz                       |  |  |  |
| GPU                                   | Mali G52 series GPU  |  |  |  |
| Operating system                      | Android 11   |  |  |  |
| Memory (RAM)                          | 4GB / 8GB  |  |  |  |
| Storage                               | eMMC – 32GB / 128GB  |  |  |  |
| Wireless connection                   | WIFI 5 (ac) / 6 (ax), Dual WIFI<br>Project screen wirelessly and use internet at the same time |  |  |  |

NOTE: Specifications in this catalog are for general reference only and are subject to change without notice.

| Model                         | DTG-55-A311D2                                | DTG-65-A311D2 | DTG-75-A311D2   | DTG-86-A311D2 |
|-------------------------------|--|---------------|---|---------------|
| <b>Signal connectivity</b>    |  |               |   |               |
| <b>1) Input interface</b>     |  |               |   |               |
| HDMI (4K60Hz)                 |  |               | 2   |               |
| DP                            |  |               | 1   |               |
| USB-C<br>(with DP+PD65+touch) |  |               | 1   |               |
| PC Audio in                   |  |               | 1   |               |
| VGA                           |  |               | 1   |               |
| USB                           |  |               | 3   |               |
| RJ-45 (1000Mbps)              |  |               | 1   |               |
| RS-232                        |  |               | 1   |               |
| <b>2) Output interface</b>    |  |               |   |               |
| Line out                      |  |               | 1   |               |
| HDMI                          |  |               | 1   |               |
| Coaxial                       |  |               | 1   |               |
| RJ-45 (1000Mbps)              |  |               | 1   |               |
|                               |  |               | (Support Lan pass-through function)                                   |               |
| Touch USB                     |  |               | 2   |               |
| <b>3) Front interface</b>     |  |               |   |               |
| HDMI                          |  |               | 1   |               |
| Touch USB                     |  |               | 1   |               |
| USB input                     |  |               | 2   |               |
|                               |  |               | (Support automatically switch to Android / OPS when changing channel) |               |
| USB type C                    |  |               | 1   |               |
| PC connection                 | Support OPS / SDM / External HDMI connection |               |   |               |
| <b>Electrical</b>             |  |               |   |               |
| Power supply                  | Input 100 – 240 V AC, 50/60 Hz               |               |   |               |
| Standby power Consumption     | ≤ 0.5 W                                      |               |   |               |
| Power consumption             | 180W   | 280 W         | 300 W   | 320 W         |
| Speakers                      | 2 x 20 W stereo (8-ohms)                     |               |   |               |

NOTE: Specifications in this catalog are for general reference only and are subject to change without notice.

| Model | DTG-55-A311D2 | DTG-65-A311D2 | DTG-75-A311D2 | DTG-86-A311D2 |
|-------|---------------|---------------|---------------|---------------|
|-------|---------------|---------------|---------------|---------------|

## Mechanical

|                               |  |                       |                        |                        |
|-------------------------------|--|-----------------------|------------------------|------------------------|
| <b>System dimensions (mm)</b> | W1258 x H745 x D82                             | W1484 x H890 x D89 mm | W1706 x H1015 x D89 mm | W1952 x H1153 x D89 mm |
| <b>Weight</b>                 | 46 KG  | 53 KG                 | 65 kg                  | 73 kg                  |
| <b>VESA mount</b>             | 400 x 400 mm                                   | 500 x 400 mm          | 600 x 400 mm           | 800 x 400 mm           |
| <b>Operating temperature</b>  | 0° ~ 35°, 35% ~ 85% RH, without condensation   |                       |                        |                        |
| <b>Storage temperature</b>    | -20° ~ 60°, 35% ~ 85% RH, without condensation |                       |                        |                        |

## Functions & features

|                                     |   |
|-------------------------------------|---|
| <b>MDM remote management system</b> | ✓   |
| <b>Freeze screen</b>                | ✓   |
| <b>Source auto detect function</b>  | ✓   |
| <b>Touch lock</b>                   | ✓   |
| <b>Wireless display</b>             | Support build in 9 screen sharing wireless display on Windows / Mac / IOS / Android<br>2- way communication, wireless touch operation supported |

## Included accessories

|                               |   |
|-------------------------------|---|
| <b>Remote control</b>         | 1 |
| <b>Installation guideline</b> | 1 |
| <b>IWB software</b>           | 1 |
| <b>HDMI &amp; power cord</b>  | 1 |
| <b>Stylus</b>                 | 2 |
| <b>Wall mount</b>             | 1 |

## Optional items

|   |
|---|
| Computer OPS / SDM specification: Intel i5/ i7<br>Video conference camera, audio conference system<br>Electric mobile stand, multi-angle stand, electric wall mount |
|---|

NOTE: Specifications in this catalog are for general reference only and are subject to change without notice.